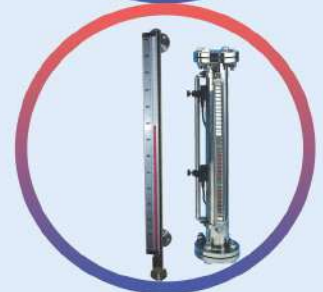


**Temperature Measurement**  
**Pressure Measurement**  
**Level Measurement**  
**Flow Measurement**



# TRANSMITTER



**HART** COMMUNICATION PROTOCOL

## DESCRIPTION

**DIFA transmitters** are used for **pressure, temperature, flow, and level** measurement in the process industry. We provide differential, gauge, and absolute pressure transmitters for the process industry. These transmitters are credited for improving plant efficiency and safety at low costs.

## APPLICATIN

With the **DIFA Transmitters**, you'll gain more control over your plant. You'll be able to reduce product variation and complexity as well as your total cost of ownership by leveraging one device across a number of pressure, level, and flow **applications**. You'll have access to information you can use to diagnose, correct, and even prevent issues. And with unparalleled reliability and experience, the **DIFA** is the industry standard that will help you perform at higher levels of efficiency and safety so you can remain globally competitive.

## SPECIFICATIONS



Material:	Stainless Steel 316L, Alloy 400
Out Put:	4 ~ 20 mA + Hart
Certification:	IP65, Exi, Exd, SIL2



# MAGNETIC FLOAT TRANSMITTER/TRANSDUCER

## DESCRIPTION

**Magnetic Float Level Transmitters** have been designed exclusively to monitor the filling level of liquid media in vessels or tanks.

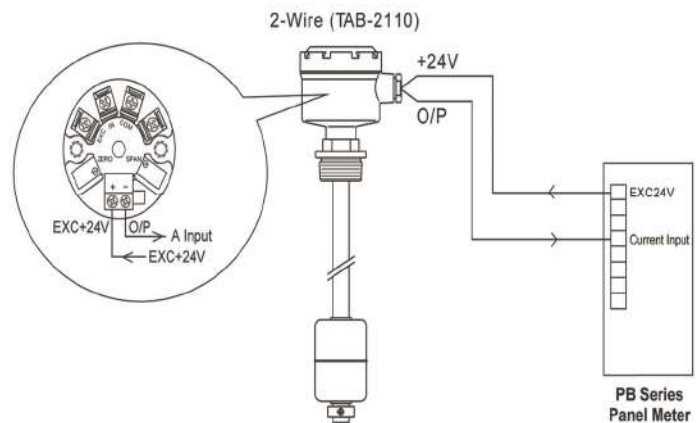
Magnetic Float Level transmitter is composed of a float and sensing rod, as the float is raised or lowered by the liquid level, the sensing rod induce a resistance output, which is directly proportional to the liquid.

level corrosion proof material make it suitable for reading filling level of many liquid and many types of industry.

## APPLICATIN

- Measuring Range: 300 - 6000 mm
- Power Supply: Loop Power 12 - 30VDC
- Out Put: 4 - 20 mA (2Wires)
- Operation Temp: -20 - 100 °C
- Non - Linearity: 0.05% F.S
- Repeatability: 0.002% F.S
- Accuracy: 5mm
- Temp. Coefficient: 100 ppm/°C
- Maximum Length: 6 M
- Steam Material: S.S 304, S.S 316

## SPECIFICATIONS



# VALVE MANIFOLD



## DESCRIPTION

To meet your variety of manifold connection system needs, DIFACO Manifold deliver a diverse product offering that is easy to order, install, and operate. The portfolio includes a wide variety of styles, materials of construction, and valving configurations to address almost any application. Purchasing a DiFACO Manifold with your DIFACO Pressure Transmitter can provide you with highest amount of value. When you bundle these two products, you'll receive a fully assembled, calibrated, and leak-tested solution that is ready for installation out of the box.

## APPLICATIN

Type: 2way, 3way, 5way and Needle Valve

Connection Size: 1/2M \* 1/2F, 1/2F \* 1/2M

Material: Stainless Steel 316L(NACE), Inconel, Hastelloy

Class : 6000 , 10000 PSI

## SPECIFICATIONS



Material:	Stainless Steel 304L, 316L(NACE), Inconel, Hastelloy
Connection Size:	1/2NPT
Process Connection:	Thread: F*F, F*M, M*F
Class:	6000, 10000



# ALL KINDS OF THERMOWELLS

## DESCRIPTION

Design, calculation and construction of thermowells based on standards **ASME B16.5, ASME PTC 19.3**

For oil, gas, refining and petrochemical industries and other important industries

Production with **Hastelloy C, Monel, SS316L, SS304L, Alloy 600, UPVC coated** and other required materials that are approved in Vendor List of oil, gas, refining and petrochemical companies and subsidiaries

## APPLICATION

Petrochemical, Oil, Gas, on/off shore, Plant engineering, Chemical engineering, Process engineering, Apparatus engineering.

Wide range of applications in Machine, Tank, Pipeline, Apparatus construction and heating technology for low, medium and high process.

## SPECIFICATIONS

Material:	Stainless Steel 304L, 316L(NACE), Inconel, Hastelloy, PTFE and UPVC coating
Insertion Length(U):	To Customer Specification (Max.: 3000mm)
Bore Size:	6mm, 7mm, 8mm, 10mm, 12mm
Connection to the Thermometer:	1/2NPT, 1NPT, 3/4NPT, G1/2, G3/4
Process Connection:	Flange (RF, RTJ), Weld, Thread
Class:	150, 300, 600, 1500, 3000, 5000, 10000



# MAGNETIC LEVEL GAUGE/TRANSMITTER



## DESCRIPTION

The magnetic level gauge is used to measure the level of fluids. A magnetic level gauge include a chamber as a communicating tube that is connected to a vessel via process connection (flanged, threaded, welded) "Floatable" device that can float both in high and low density fluids and a ruler.

A float with a magnet inside rises and drops according to the liquid level change, magnetic flags will flip as float passes through to indicate liquid level based on magnetic attraction, method without power supply.

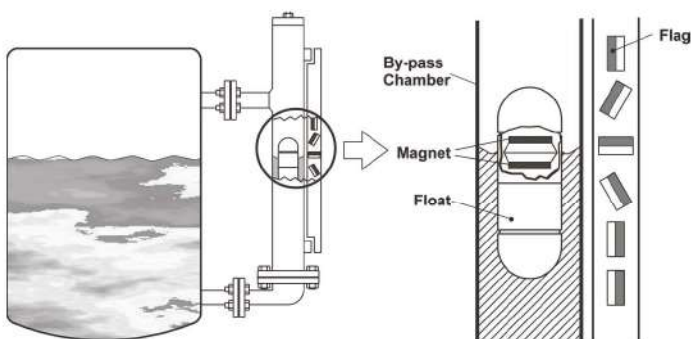
## APPLICATION

Applicable in environment with high temperature, high pressure, strong acid, strong alkaline and hazardous locations. the structure is simple but durable and reliable.

It is also available with various options for upgrade.

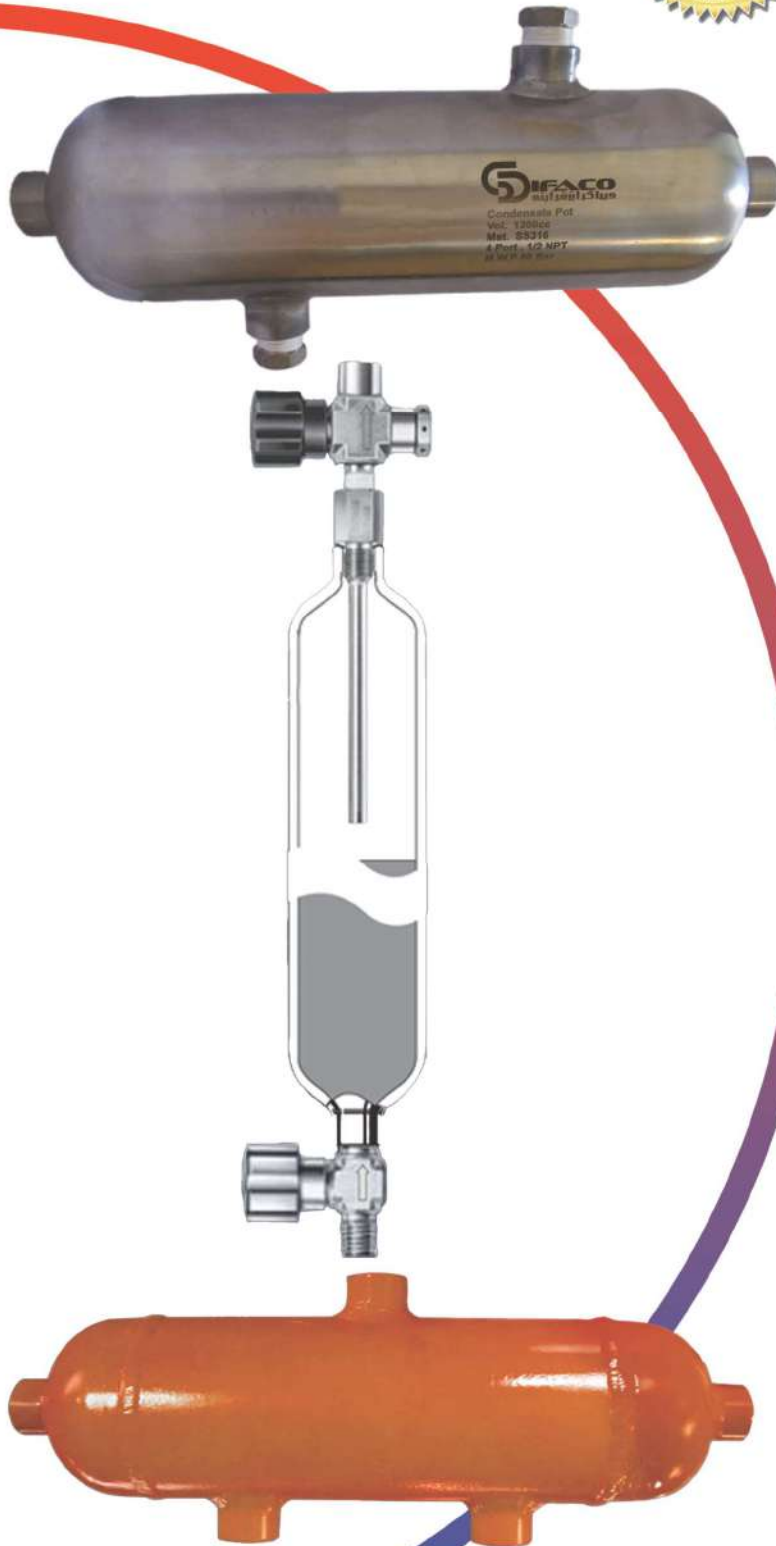
A level transmitter or magnetic switch can be installed and adjusted during operation. It is not operated by electricity thus it will not be affected by power failure.

## SPECIFICATIONS



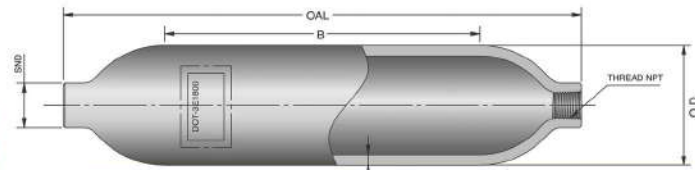


# SEAL POT SAMPLE CYLINDERS



## DESCRIPTION

Difaco offers a wide selection of sample cylinders that meet the various standards of the oil, gas and petrochemical industry related to the transport of chemicals. These durable, pressure-grade metal cylinders also prevent samples from escaping during sampling system operation and are easy to clean.



## APPLICATION

Sampling Cylinders permit the extraction of a sample from a remote process location and provide safe containment for storage and transportation to the laboratory for analysis. These cylinders are rated to 300 BAR at room temperature for liquids and gases. Some applications include hydrocarbon sampling in refineries, gas sampling in chromatography and condensate sampling in fossil-fuel and nuclear-power plants. In similar applications, petrochemical facilities and gas processing plants

## SPECIFICATIONS

Material:	Stainless Steel 304L, 316L, A105, Alloy 400
Connection Size:	1/8, 1/4, 1/2, 1 NPT
Pressure Rating:	10 ~ 300 BAR
Internal Volume (cm <sup>3</sup> ± 5%):	300 ~ 12000 cm <sup>3</sup>

# DATA LOGGER



## DESCRIPTION

Monitoring temperature, humidity, pressure and tank level  
 Fluid flow and volume monitoring  
 System performance monitoring  
 Report errors  
 Reservoir level control  
 It has 4 analog input channels, 2 digital input channels and 2 relay outputs  
 4-20 mA input with the ability to connect to a variety of transmitters  
 Working voltage 12-28 VDC with the ability to connect to a solar cell

## APPLICATION

In water and wastewater industries, treatment plants, pumping stations, automatic meteorological station, automatic rain gauge station, automatic snow gauge station, surface water source measuring station, groundwater resource measuring station, power plants, substations, Oil, gas and petrochemicals



## SPECIFICATIONS

Characteristics	
Operating Voltage	8 ~ 28 VDC
Continuous Current	100Ma
Battery	Rechargeable lithium Battery
Working Temperature	-20 to 60 °C
Sampling Period	Programmable
Wireless Communication	GSM/GPRS
Modem Frequency	900 Mhz ~ 1800 Mhz
Configuration	Windows Application
Remotely Access to Records	Web Application
Available Ports	USB, RS232, RS485
Input	4 analog 4-2mA, 2 contact, Temperature (RTD)
Output	Relay Contact (2)
Physical Protection	Available with IP54 and IP67 housings & Exd
Application	Flow, Temperature, Pressure, Level, Reading & Data Transfer





# TEMPERATURE REDUCER

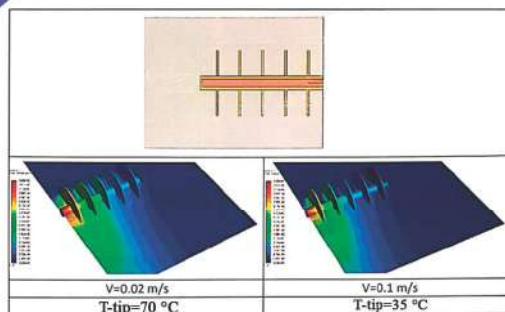
## DESCRIPTION

Temperature reducers are installed in places where the fluid has a very high temperature, and the high temperature causes many problems for instrumentation equipment such as failure, reduced the accuracy. Therefore, DIFA Company decided to solve this problem for all industries by temperature reducers. The temperature reducers have been made with different materials and two types. Because temperature reducers have a better performance in lowering the temperature of the fluid by at least three times than siphons and also due to their excellent performance, they are significantly more economical than siphons.

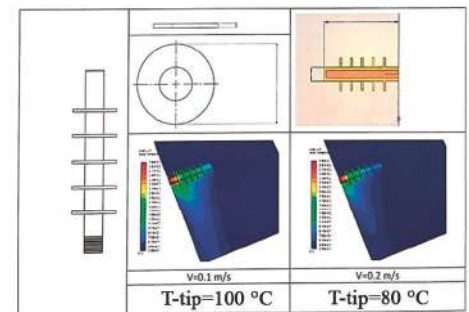
## APPLICATIN

Manufacturing: Iran, DIFACO  
Connection Size: 1/2" NPT-M  
Material: Stainless Steel 316L(NACE), Inconel, Hastelloy  
Max Pressure: 120BAR

## SPECIFICATIONS



Type: A  
Input Temperature: 275 °C



Type: B  
Input Temperature: 275 °C

# FLUSHING RING & ORFICE PLATE



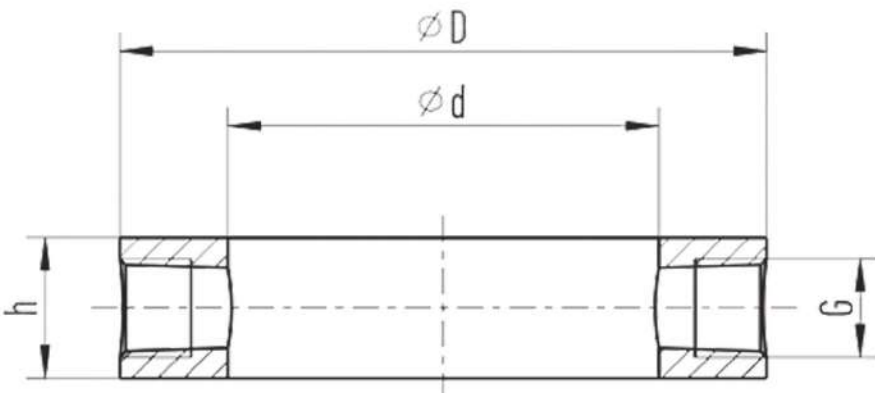
## DESCRIPTION

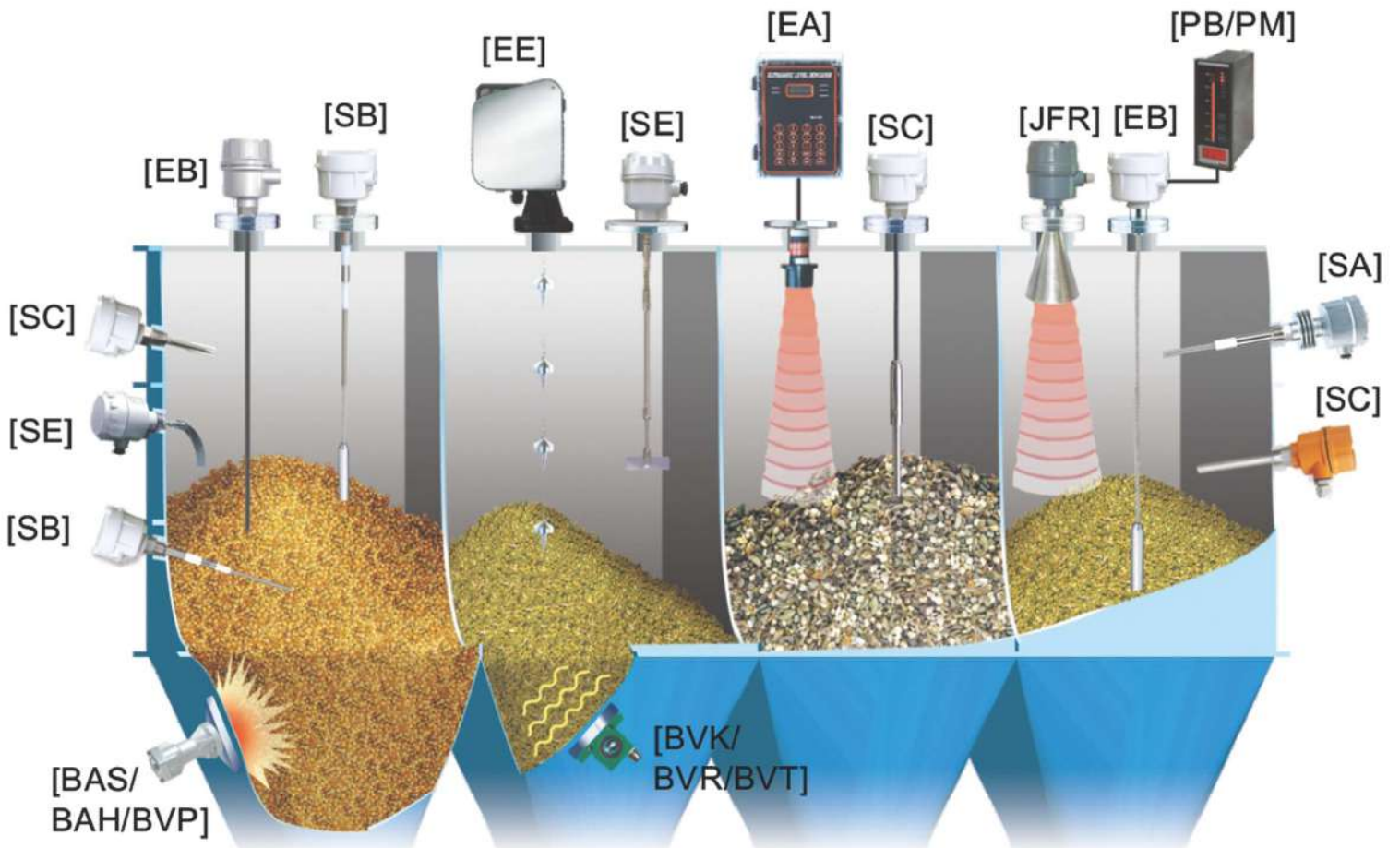
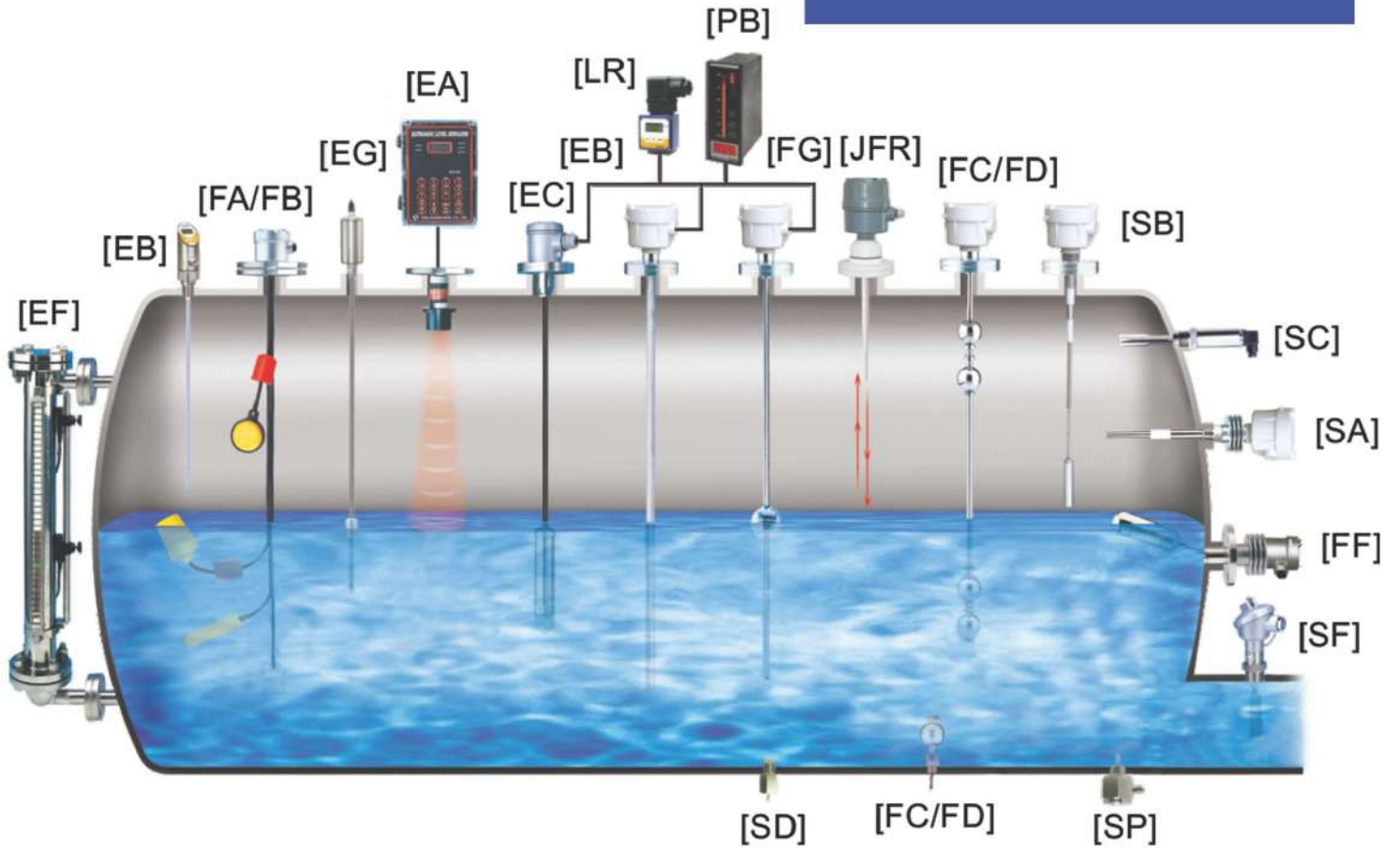
A flushing ring is metal donut-shaped ring installed between the seal and the customer process connection. It is a wetted part. The ring has a port(s) that can be used to flush the surface of the diaphragm during cleaning. The ports are threaded and available in either 1/4-inch or 1/2-inch sizes. The ports are available with extensions to make them easier to reach. The ring may also have ring holders to ensure the entire assembly aligns correctly to prevent leaks.

## APPLICATION

- For flange-connection diaphragm seals with flush diaphragm or cell-type design
- Flushing of process lines to avoid deposits or clogging
- Cleaning deposits off diaphragms
- Measuring location calibration after separation from the process

## SPECIFICATIONS







**WWW.DIFACO.COM**



**Telefax**

+9821 88343692-3



**E-Mail**

Sales@difaco.com



**Address**

Unit 2, No.9, Sanaei St. Karimkhan zand, Tehran-Iran